

## ▶ STREAMLINED WASTEWATER TREATMENT MANAGEMENT



ISO 14001: 2015  
OHSAS 18001: 2007  
AS/NZS 4801: 2001

- ▼ PLANT OPTIMISATION
- ▼ CHEMICAL SUPPLY
- ▼ SERVICE AND MAINTENANCE
- ▼ SPARE PARTS
- ▼ SAMPLING AND MONITORING

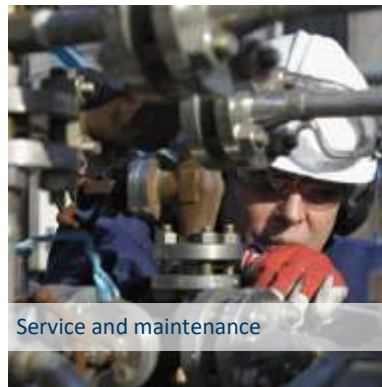


- ▼ Hydroflux Utilities provides the key link to integrating the Hydroflux Group businesses by providing a comprehensive support network for clients throughout Australia.

## About us

- Hydroflux Utilities provides many forms of water or wastewater plant support programs including, regular service and preventative maintenance contracts, chemical and spares supply and operation contracts for both industrial and municipal customers.

Our Utilities team has experience in all aspects of wastewater treatment processes and equipment and whether or not your wastewater treatment plant was constructed by one of the Hydroflux companies, the best quality service for your plant is assured.



**HYDROFLUX**  
UTILITIES

Operation and trouble shooting of industrial biological plants is one of our key strengths



**ISO 14001 ENVIRONMENTAL  
MANAGEMENT SYSTEM**

ISO 14001:2015 Certified by GRS under  
certificate number 47714001610009.

Hydroflux Utilities is committed to supporting  
the communities within which we operate. We  
believe in the practice of social responsibility  
and encourage similar behaviour in our  
employees and suppliers.

**SYSTEM  
CERTIFIED**



**ENVIRONMENTAL  
MANAGEMENT**

**ISO 14001: 2015**

## We are far more than just a chemical supplier...

1 We will ensure that the chemical program is ideally suited to your equipment and allows performance requirements at all time to be met.

2 We will ensure that the chemicals used offer best value for money in terms of chemical cost, usage and management.

3 We will ensure that chemicals are supplied in a format the minimises long term costs, does not compromise safety and reduced operator requirements.





 **HYDRABOND**<sup>®</sup>

 **HYDRALITE**<sup>®</sup>

 **HYDRAPRIME**<sup>®</sup>

 **HYDRABASE**<sup>®</sup>

 **HYDRACLEAN**

 **HYDRAFOAM**<sup>®</sup>

 **HYDRAFERM**<sup>®</sup>

- ▶ We cover a full range of traditional chemicals as well as many specially blended formulas tailored specifically for industrial raw water and wastewater treatment processes.

- Wastewater treatment plant optimisation is by far the most unrecognised asset in the operation of a wastewater treatment plant, yet it represents the single biggest opportunity for performance improvement and reducing operating costs.

Plant optimisation is not a new or even difficult process, but to achieve the best results you need to engage a business that has experience in operation of wastewater treatment plants.

Hydroflux engineers have this experience and will work through problems systematically and achieve the best results for your wastewater treatment plant.



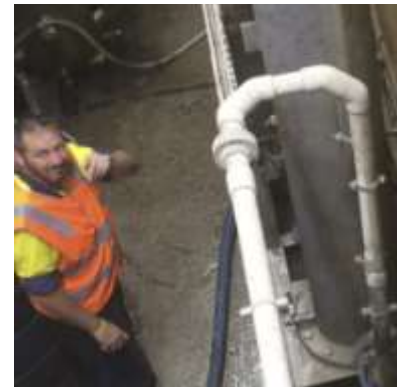
**HYDROFLUX**  
UTILITIES

- Hydroflux Utilities is a leader in the operation of wastewater treatment plants. Engaging Hydroflux Utilities to operate your wastewater treatment plant will allow you to focus on your core business operations.

A Hydroflux Utilities operation contract is peace of mind.

We understand that every wastewater treatment plant is different but our engineers and technicians have vast experience covering the entire range of primary, biological and reuse system throughout the industrial and municipal sector.

Our comprehensive service management programs will ensure that your plant runs smoothly, efficiency and complies with regulations at all times.



**HYDROFLUX**  
UTILITIES



PLC

A Hydroflux Utilities Operation contract is peace of mind



**HYDROFLUX**  
UTILITIES  
**FOR SERVICE CALL**  
PH 130 417 897  
E. service@hydrofluxutilities.com.au  
www.hydrofluxutilities.com.au  
WATER | SCIENCE | TECHNOLOGY



**OHSAS 18001 & AS/NZS 4801  
SAFETY MANAGEMENT SYSTEM**

OHSAS 18001:2007 Certified by GRS under  
certificate number 47718001610009

AS/NZS 4801:2001 Certified by GRS under  
certificate number 4774801610009

Hydroflux Utilities is firmly committed to work activities being carried out safely, and with all appropriate measures taken to remove risks to the health, safety and welfare of all employees, contractors, authorised visitors, and anyone else who may be affected by our operations.

**SYSTEM  
CERTIFIED**

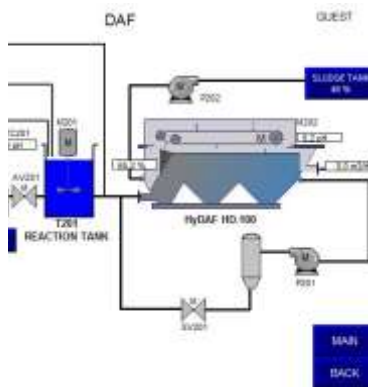
**GRS**

**OCCUPATIONAL  
HEALTH & SAFETY  
MANAGEMENT**

**OHSAS 18001: 2007  
AS/NZS 4801: 2001**

- HyCONNECT is a remote connection facility utilised by the Hydroflux Group to provide advanced support to our clients.

This facility provides our experienced wastewater technicians and engineers 24/7 real time access to our client's treatment plant control system.



The features of the HyCONNECT system include a Secure Remote Login to HMI screens or SCADA for complete operation and monitoring including:

- WWTP operation by Hydroflux or client staff.
- Plant operational assistance.
- Fault diagnosis and correction.
- Compliance monitoring.
- Secure remote login to PLC for program changes (after commissioning these are managed via our change control system).
- SMS alarm notification to Hydroflux service technicians.



## HyCONNECT®

- ▼ Hydroflux Utilities is reliable, efficient and effective – as experts we manage complex situations and deliver dynamic solutions. It is simple, streamlined wastewater treatment management.



## Water Sampling

- ▼ Wastewater is one of the most important environments to monitor. Increasingly strict regulations require cleaner wastewater discharges into both watercourses and into sewer systems.

It is therefore essential that your sampling program provides you with the most accurate results to ensure that performance of your plant is properly measured and reported.

Hydroflux Utilities can provide comprehensive sampling programs to suit any wastewater treatment plant. We have the equipment and personal experienced in all types of sampling techniques.

We will always ensure that your samples are taken accurately and stored in a proper environment to mitigate any possibility of changes in sample composition between collecting and analysis.



**HYDROFLUX**  
UTILITIES

# Hydroflux Utilities Pty Ltd

## Australia and Australasia

### Head Office:

Level 26, 44 Market Street  
Sydney NSW 2000 Australia

### Victorian Office:

84 Hotham St. Preston  
VIC 3072 Australia

### Sutherland Engineering Office:

3-5 Stapleton Ave.  
Sutherland NSW 2232 Australia

### Queensland Office:

1 Westlink Court  
Darra QLD 4076

**Int:** +61 2 9089 8833

**Aus:** 1300 417 697

[info@hydrofluxepco.com.au](mailto:info@hydrofluxepco.com.au)

[www.hydrofluxepco.com.au](http://www.hydrofluxepco.com.au)

---

## New Zealand

### Head Office:

Level 26, PwC Tower  
188 Quay St  
Auckland 1010, New Zealand

**Int:** +64 9 352 2052

**NZ:** 09 352 2052

[info@hydroflux.nz](mailto:info@hydroflux.nz)

[www.hydroflux.nz](http://www.hydroflux.nz)

---

## Fiji and Pacific Islands

### Head Office:

Suva Business Centre  
217 Victoria Parade  
Suva, Fiji

**Int:** +679 773 6950

**Fiji:** 773 6950

[info@hydroflux.com.fj](mailto:info@hydroflux.com.fj)

[www.hydroflux.com.fj](http://www.hydroflux.com.fj)

---

## United Kingdom and Europe

### Head Office:

1000 Lakeside North Harbour Western Road  
Portsmouth PO6 3EZ

**Int:** +44 23 9270 4087

**UK:** 0239 270 4087

[info@hydroflux.uk](mailto:info@hydroflux.uk)

[www.hydroflux.uk](http://www.hydroflux.uk)

Hydroflux Utilities is GRS Certified to the following standards

### OHSAS 18001 & AS/NZS 4801 SAFETY MANAGEMENT SYSTEM



Certificate Number: 47718001610009

Certificate Number: 4774801610009

### ISO 14001 ENVIRONMENTAL MANAGEMENT SYSTEM



Certificate Number: 47714001610009